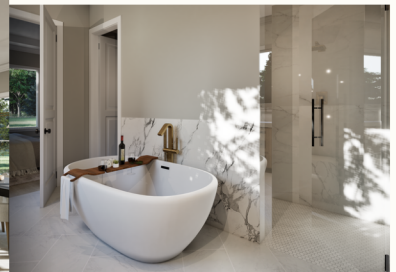





 FORREST CREEK ESTATES

THE HAWTHORNE

A timeless residence blending classic architecture with elegant indoor-outdoor flow, ideal for those who value sophistication rooted in nature.



Welcome to the Forrest Creek Estates - luxury residences designed exclusively for our Orange County Conservation Neighborhood. Each plan reflects the natural beauty and privacy of our 2.6+ acre homesites, blending architectural excellence with the serene landscape of Hillsborough. Every home offers generous living spaces, timeless craftsmanship, and a connection to the trails, streams, and green spaces that define our community.

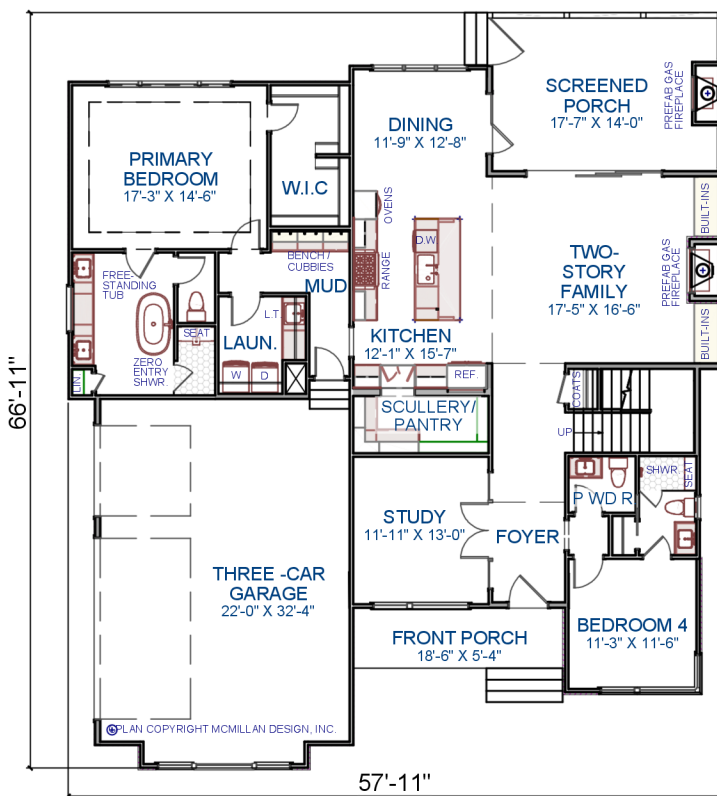
Here, luxury is not just found in the details, but in the feeling of coming home.



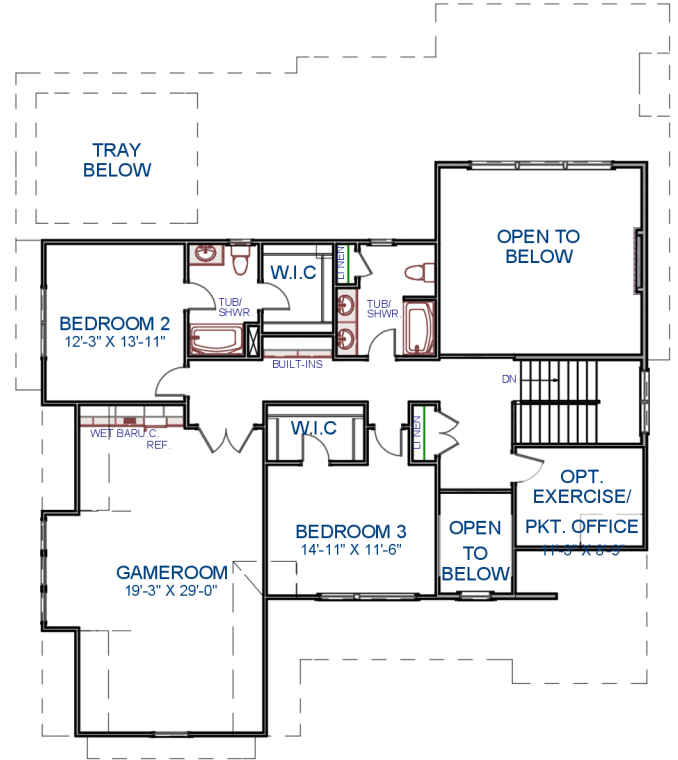
THE HAWTHORNE



Front Elevation



First Floor



Second Floor

M007-25

© 2025 McMillan Design

TEMPORARY BROCHURE ONLY, MAY NOT REFLECT ACTUAL CHARACTERISTICS OF FINISHED HOME. FLOOR PLANS ARE SHOWN ONLY FOR DISPLAY PURPOSES. WINDOW SIZES AND LOCATIONS, ROOM SIZES, AND DIMENSIONS ARE APPROXIMATE AND MAY VARY. PRICES AND FEATURES SUBJECT TO CHANGE WITHOUT NOTICE. PLEASE CONSULT SALES COUNSELOR FOR DESIGN UPDATES.



McMillan Design

847 Wake Forest Business Park, Suite 102
Wake Forest, NC 27587
919.263.1509
www.mcmillan-design.com

FLOOR AREA:		
FIRST FLOOR HTD. =	2,131	S.F.
SECOND FLOOR HTD. =	1,496	S.F.
TOTAL HEATED AREA =	3,627	S.F.
THREE CAR GARAGE =	730	S.F.