



FORREST CREEK ESTATES

## THE ASHTON

A spacious, open layout, built for families and entertaining, offering elevated design and effortless livability on expansive estate homesites.



Welcome to the Forrest Creek Estates - luxury residences designed exclusively for our Orange County Conservation Neighborhood. Each plan reflects the natural beauty and privacy of our 2.6+ acre homesites, blending architectural excellence with the serene landscape of Hillsborough. Every home offers generous living spaces, timeless craftsmanship, and a connection to the trails, streams, and green spaces that define our community.

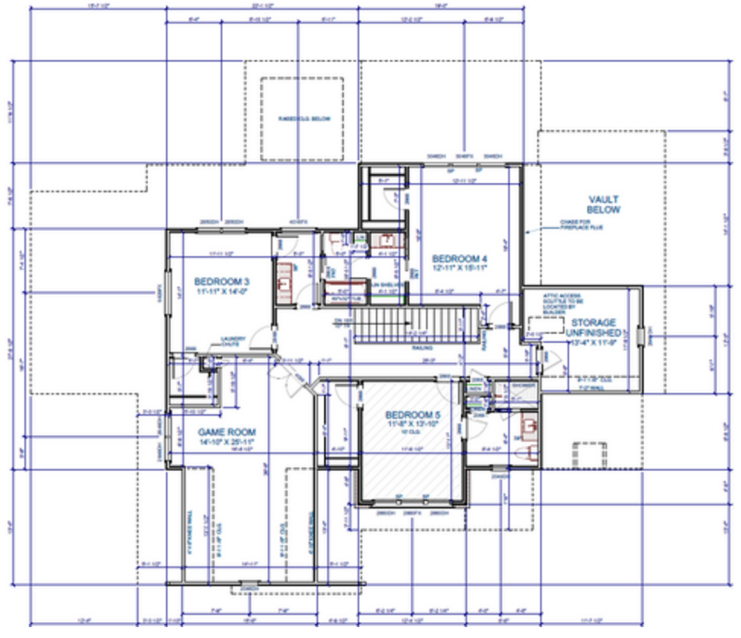
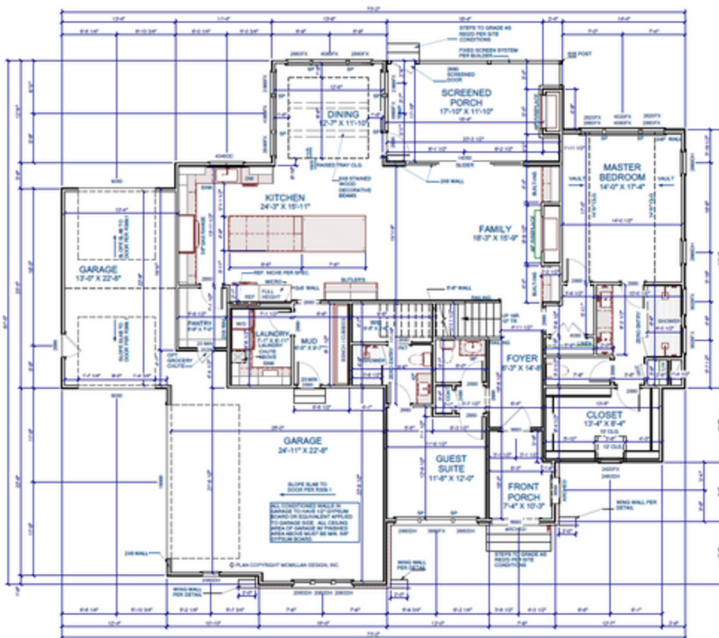
Here, luxury is not just found in the details, but in the feeling of coming home.



# THE ASHTON



## Front Elevation



## First Floor

## Second Floor

M073-24

© 2025 McMillan Design

TEMPORARY BROCHURE ONLY, MAY NOT REFLECT ACTUAL CHARACTERISTICS OF FINISHED HOME. FLOOR PLANS ARE SHOWN ONLY FOR DISPLAY PURPOSES. WINDOW SIZES AND LOCATIONS, ROOM SIZES, AND DIMENSIONS ARE APPROXIMATE AND MAY VARY. PRICES AND FEATURES SUBJECT TO CHANGE WITHOUT NOTICE. PLEASE CONSULT SALES COUNSELOR FOR DESIGN UPDATES.



**McMillan Design**

847 Wake Forest Business Park, Suite 102

Wake Forest, NC 27587

919.263.1509

[www.mcmillan-design.com](http://www.mcmillan-design.com)

**FLOOR AREA:**

**FIRST FLOOR HTD. = 2,114 S.F.**

**SECOND FLOOR HTD. = 1,506 S.F.**

**TOTAL HEATED AREA = 3,620 S.F.**

**THREE CAR GARAGE = 914 S.F.**